

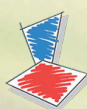


# SIRIUS SPC+

PERFORMANCE FABRIC for  
VERTICAL & ROLLER BLINDS



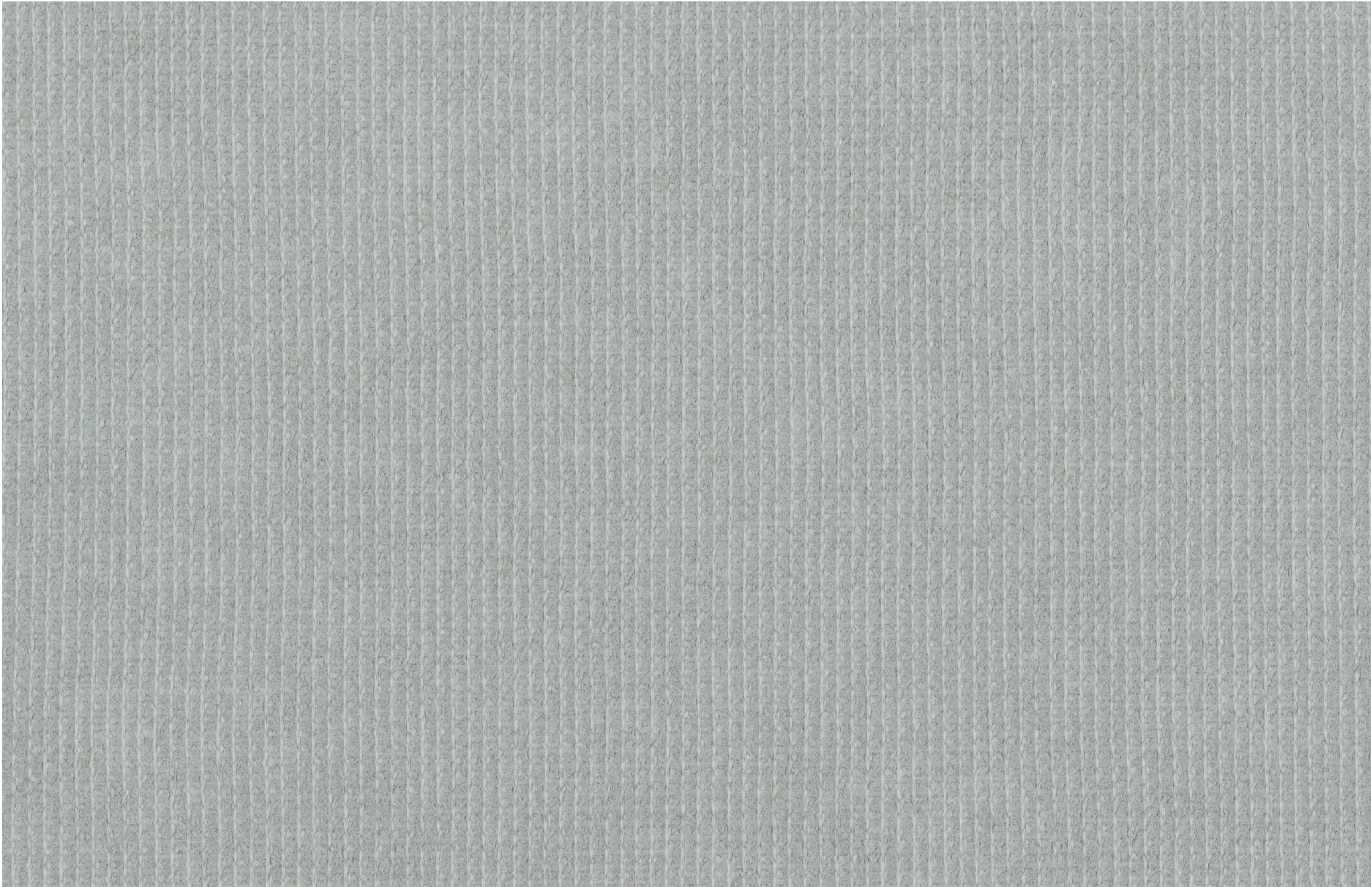
Dearnleys



Pentel

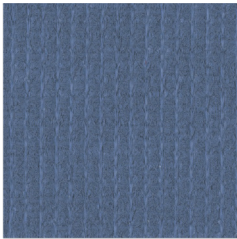
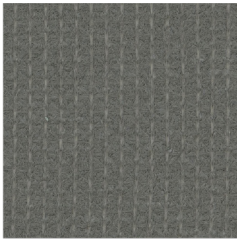
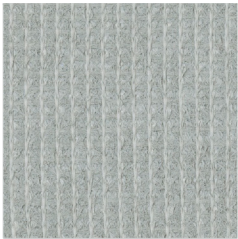
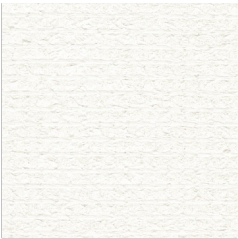


SIRIUS SPC+

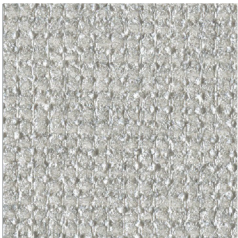


FLINT

Face



SPC Back



WHITE

2m  
89mm & 127mm

CHALK

2m  
89mm & 127mm

FLINT

2m  
89mm & 127mm

CHARCOAL

2m  
89mm & 127mm

ROYAL BLUE

2m  
89mm & 127mm



**REFLECTIVE**  
SPC BACK

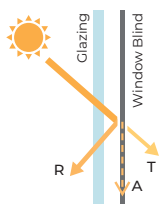
**THERMAL &**  
VISUAL COMFORT

The Solar Protective Coating reflects heat and light more effectively, improving the fabric's thermal energy performance and reducing the demand for artificial heating and cooling. SPC provides enhanced glare control allowing better visual comfort.

Specifications	Sirius SPC+
Colour Range	5
Dim Out	Light Filtering
Composition	100% Polyester
Exterior Colour	Self-coloured, pearlescent Solar Protective Coating (SPC)
Roller Width	2m
Roller Roll Length	20m
Vertical Louvre Widths	89mm, 127mm
Vertical Roll Length	100m
Weight	329g/m
Thickness	0.77mm
Blind Types	Roller, Panel, Vertical
Colour Fastness (scale of 8)	8 - BS EN ISO 105-B02-2014
Flammability Standard	BS 5867 Part 2 Type B
Environmental Certification	OEKO-TEX® StEP
	Greenshield
Bacteria & Fungal Resistant	ASTM G21, Ultra-Fresh*
Cleaning	Gently wipe clean with a soft, damp cloth. Allow to dry in down position.

\*Ultra-Fresh is a registered trademark of Microban Products Company

Solar, Optical & Colour Fastness Properties																			
	Solar			Visual			UV Block	CF	DP	SC - EN 14501					Gtot				
	Rs	As	Ts	Rv	Av	Tv				A	B	C	D	E	A	B	C	D	E
Chalk	77	12	11	80	11	8	100	8	0	0.32	0.35	0.37	0.28	0.36	0.28	0.31	0.32	0.24	0.32
Charcoal	15	84	0	17	83	0	100	8	0	0.72	0.71	0.59	0.34	0.56	0.62	0.61	0.52	0.29	0.49
Flint	62	31	7	49	50	1	100	8	0	0.41	0.44	0.42	0.29	0.41	0.36	0.38	0.37	0.25	0.36
Royal Blue	41	54	5	16	84	0	100	8	0	0.55	0.56	0.50	0.31	0.48	0.48	0.49	0.43	0.27	0.42
White	77	12	11	80	12	8	100	8	0	0.32	0.35	0.37	0.28	0.36	0.28	0.31	0.32	0.24	0.32



**Solar Gain:** The amount of heat increase resulting from solar energy entering a room. It is the total of three separate parts - the amount of energy transmitted directly into the room, the energy which is absorbed by the blind and the proportion of energy which is absorbed by the window.

**R:** % of reflected heat and light. **A:** % of absorbed heat and light. **T:** % of transmitted heat and light. **UV Block:** the % of UV light blocked by the fabric.

**Colour Fastness (CF):** Scale of 8, BS EN ISO 105-B02-2014. **Darkening Performance (DP):** Scale of 0-4. 0: lowest opacity 4: highest. A rating of 4 indicates the product is completely opaque with no pinholes or light transfer.

**Shading Co-efficient (SC):** The solar heat gain with the blind at the window divided by the solar heat gain with no blind at the window. The lower the shading co-efficient, the higher the efficiency of the fabric.

**Gtot:** Amount of heat entering through the glazing and shading combined.

**Glazing system (EN 410)**  
**A:** Clear Single Glazing.  
**B:** Clear Double Glazing.  
**C:** Clear Double Glazing Low Emissivity.  
**D:** Solar Control Double Glazing Low Emissivity.  
**E:** Triple Glazing.



## SIRIUS SPC+



### Dearnleys

t: 01924 371 791 e: [info@dearnleys.com](mailto:info@dearnleys.com)

Units 1 - 4, Sirdar Business Park, Flanshaw Lane, Wakefield, WF2 9HX

[www.dearnleys.com](http://www.dearnleys.com)

### Pentel

t: 0161 872 7642 e: [info@pentel-contracts.com](mailto:info@pentel-contracts.com)

2nd Floor, Lowry Mill, Lees Street, Swinton, Manchester, M27 6DB

[www.pentel-contracts.com](http://www.pentel-contracts.com)