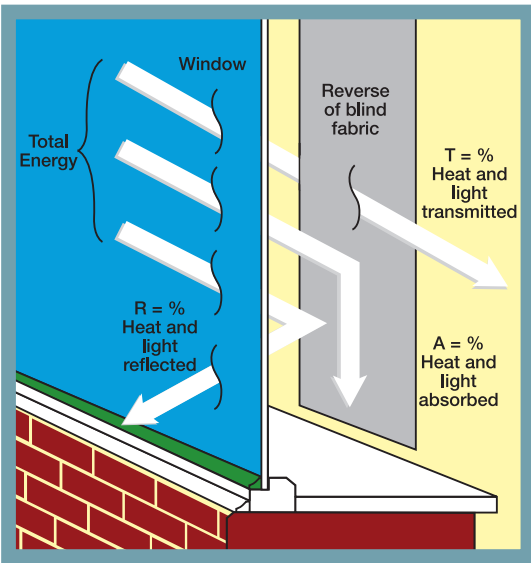




SOLAR, OPTICAL AND COLOUR FASTNESS PROPERTIES

SHADING CO-EFFICIENT

The solar heat gain with the blind at the window divided by the solar heat gain with no blind at the window. The lower the shading co-efficient, therefore, the higher the efficiency of the fabric. The test results in the table below have been achieved using a single 6mm glass glazing system.



OBSCURA	SOLAR, OPTICAL PERFORMANCE CHART													
	SOLAR			OPTICAL			SC	CF	DIM out	UV block	SG	G TOT		DG LE
T _s	R _s	A _s	T _o	R _o	A _o	TG						DG		
Black	0	4	96	0	4	96	0.96	6	5	100	0.573	0.538	0.545	0.600
Cream	0	61	39	0	68	32	0.41	6	5	100	0.288	0.324	0.343	0.382
Ivory	0	72	28	0	84	16	0.30	6	5	100	0.220	0.260	0.289	0.327
Light Grey	0	49	51	0	55	45	0.53	6	5	100	0.345	0.381	0.389	0.430
Navy	0	9	91	0	6	94	0.91	6	5	100	0.549	0.564	0.532	0.586
Putty	0	46	54	0	49	51	0.56	6	5	100	0.364	0.401	0.406	0.448
Sand	0	62	38	0	68	32	0.40	6	5	100	0.280	0.319	0.340	0.379
Slate	0	27	73	0	30	70	0.74	6	5	100	0.458	0.485	0.471	0.518
Snow	0	77	23	0	90	10	0.26	6	5	100	0.192	0.230	0.261	0.300
White	0	69	31	0	77	23	0.33	6	5	100	0.241	0.278	0.303	0.342

T: % Transmittance R: % Reflectance A: % Absorption SC: Shading Co-efficient CF: Colour Fastness Dim out: 1= High light penetration, 4= Low light penetration, 5= Blackout UV Block: the percentage of UV light blocked by the fabric GTOT: SG = Single Glazed, DG = Double Glazed, TG = Triple Glazed, DG LE = Double Glazed Low Emissivity.

Obscura

Performance Fabrics for Roller & Vertical Blinds

ARCHITECTS SPECIFIERS CONTRACTORS

CI/SfB 1976 reference by SfB Agency		
(76.7)	X	



FIRE PROTECTION

Obscura meets FR standard BS 5867 Part 2 Type B. Further information is available on request.



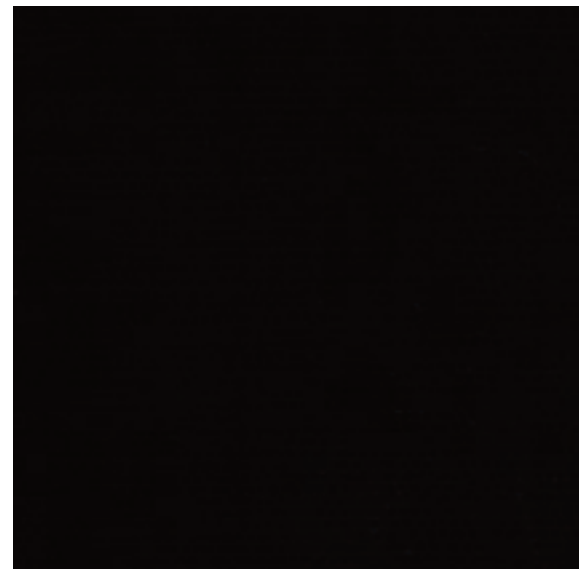
North West, West Midlands & Wales
 Pentel Contracts Limited • Dyer Street, off Ordsall Lane
 Salford • Manchester • M5 4TH
 t•0161 872 7642 f•0161 872 7636
 e • info@pentel-contracts.com www.pentel-contracts.com



Rest of UK
 Dearnleys Limited • 120-128 Wrenthorpe Road
 Wrenthorpe • Wakefield • W.Yorkshire WF2 0JN
 t•01924 371 791 f•01924 386 001
 e • info@dearnleys.com www.dearnleys.com

Obscura

Performance Fabrics for Roller & Vertical Blinds



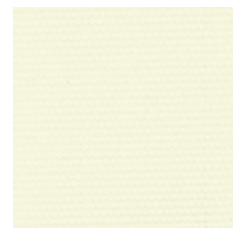
black



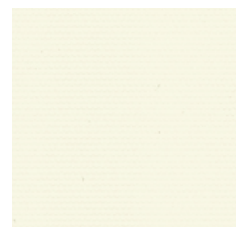
white



snow



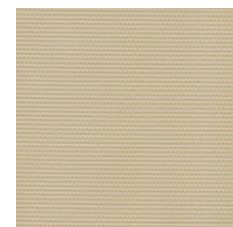
ivory



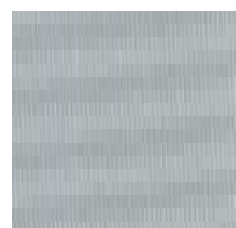
cream



sand



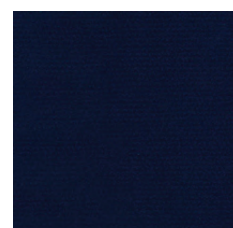
putty



light grey



slate



navy

COLOUR RANGE	10
LOUVRE WIDTHS AVAILABLE	89mm (3½"), 127mm (5") other widths available on request
ROLLER BLIND WIDTH	1.83m (72")
FABRIC COMPOSITION	72% pvc 28% glass fibre
FABRIC WEIGHTS	450g/m ² (13.3oz/yd ²)
FLAMMABILITY STANDARDS	Complies with BS 5867 (1980 Part 2, Type B)
COLOUR FASTNESS	Tested in accordance with BS EN ISO 105-B01:1999
CLEANING	Wipe clean. See manufacturer's instructions.
GTOT	A measure of total solar energy that passes through the glazing system and the fabric
AVAILABILITY	Ex-stock
FABRIC SAMPLES	Available on request

AT A GLANCE



roller blind



vertical blind



flame retardant



black out



suitable for moist environments



wipe clean



Colours reproduced here may vary from the actual colours due to the limitations of the printing process. Great care has been taken to ensure that the fabric swatches and the information supplied are correct, however specifiers and customers are advised to check the suitability of materials before use.

LARGER SAMPLES ARE AVAILABLE ON REQUEST.