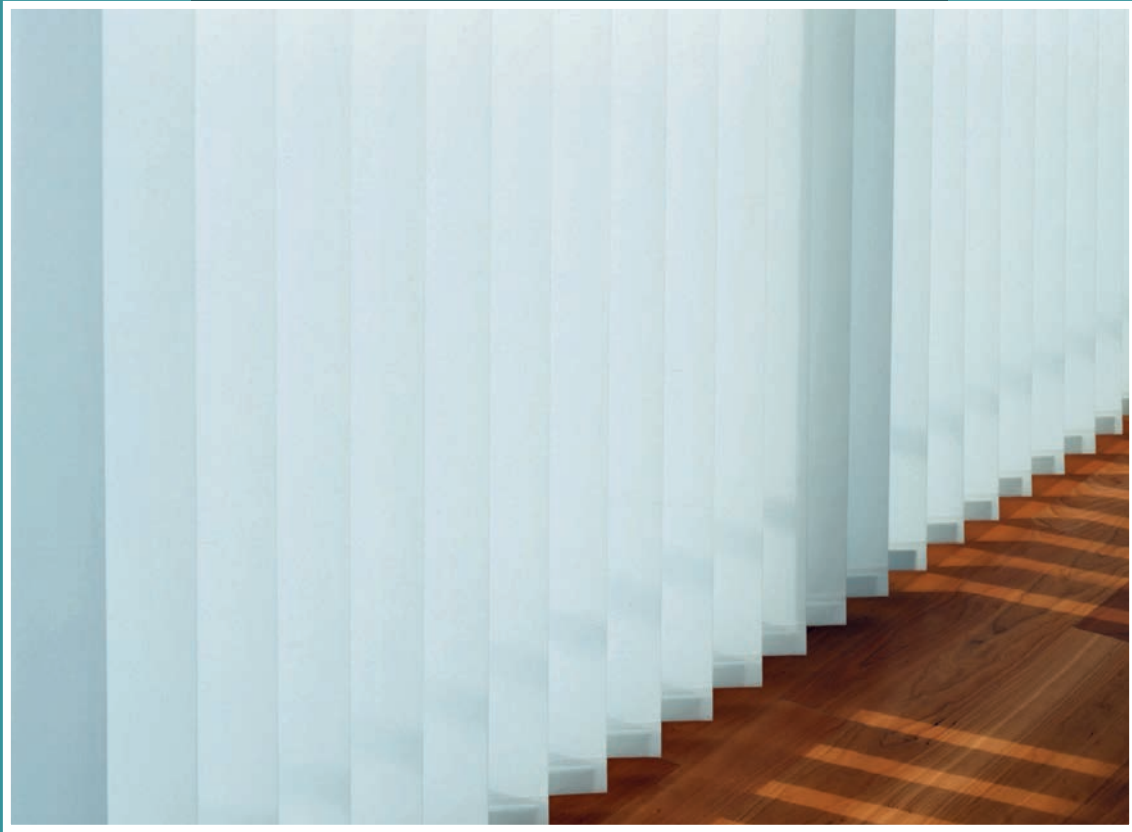




Uniclass L4224	Epic D22
CI/SfB (76.7)	X



1000

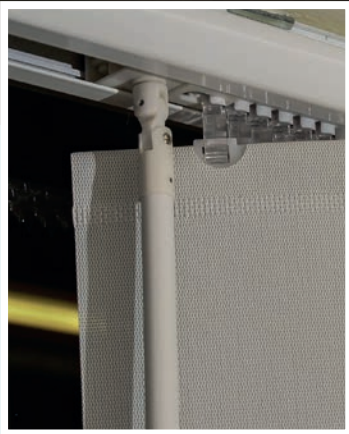
vertical blind systems

**Control light • Save energy • Preserve view**

[www.astraluxsystems.com](http://www.astraluxsystems.com)

# Astralux 1000

vertical blind systems



The Astralux 1000 vertical blind system is suitable for virtually any type of vertical glazing. As with all Astralux products the systems are designed for use in commercial, education, healthcare and leisure environments providing ease of operation, low maintenance and durability.

## DESCRIPTION

This vertical blind system comprises an aluminium headrail with flame retardant fabric louvres. The louvres can be fully drawn and can be tilted to accurately attenuate the amount of light entering the space. A range of manual and motorised operating controls are available.

# Astralux 1000

## vertical blind systems

The Astralux 1000 vertical blind system is available with 89mm or 127mm wide louvres in an extensive range of fabrics and colours including:

- Anti-microbial
- Black-out
- Dim-out
- Glare control
- Energy saving
- Heat reflective
- Metallised
- Screen

### CONTROL OPTIONS

- Cord and chain, a continuous cord on the side of the blind traverses the louvres and a continuous chain tilts the louvres
- Wand operation where a wand is fixed to the leading louvre and is used to traverse as well as tilt the louvres
- Mono-command option where one continuous chain both traverses and tilts the louvres
- Motorised – low voltage and 240v systems for tilt only or full operation

### N10 SPECIFICATION GUIDE

Vertical louvre blinds to be Astralux 1000 System with extruded aluminium headrail finished in silver anodised or powder coated white\* Operation of louvres by cord for traverse and chain for rotation / mono command chain / mono command wand / motorised\* Fabric to be . . . . . + / chosen from Astralux range selector\* Colour to be . . . . . + Supplied and installed by an approved Astralux distributor.

\*Delete as applicable +Insert as applicable



# Astralux 1000

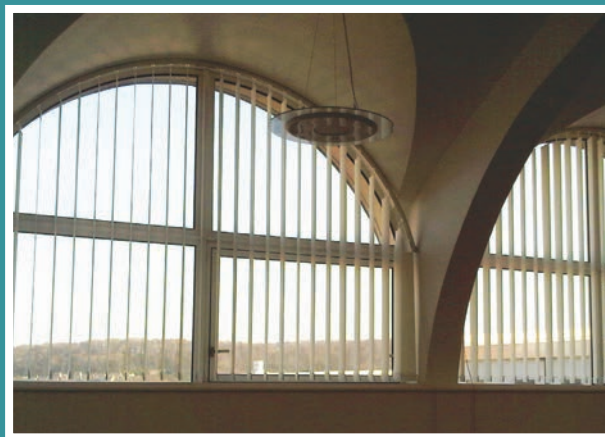
## vertical blind systems

### PRODUCT OPTIONS

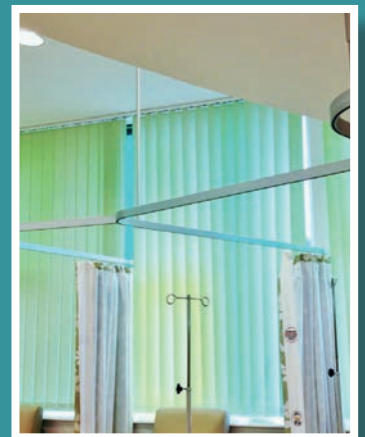
- Sloping headrails for angled glazing
- Shaped headrails for bay and arched windows
- Medi-blind for healthcare applications



Welded bottom pockets



Arched headrails



Medi-blind

### CHILD SAFETY

- All Astralux products operated by cords or chains will be supplied with BS EN 13120:2009+A1:2014 compliant safety devices where required
- There are also inherently child safe operating options available with all Astralux products

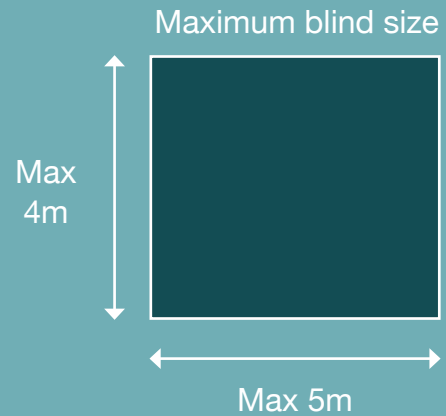


# Astralux 1000

## vertical blind systems

### DIMENSIONS

The Astralux 1000 vertical blind system can be used with any glazing from standard windows through to large glazed areas and curtain walling.



### OTHER ASTRALUX SYSTEMS

#### Astralux 2000

Venetian Blind Systems

#### Astralux 3000

Roller Blind Systems

#### Astralux 4000

Room Darkening Systems

#### Astralux 5000

Tensioned Roller Blind & Atria Systems

#### Astralux 6000

Internal & External Louvre Blind Systems

#### Astralux 7000

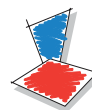
Awning Systems

#### Astralux 8000

External Venetian Blind Systems



Astralux products are available from:



**Dearnleys**

Dearnleys Limited  
120-128 Wrenthorpe Road · Wrenthorpe  
Wakefield · West Yorkshire WF2 0JN · England  
T: 01924 371 791 F: 01924 386 001  
E: info@dearnleys.com

Astralux has a policy of continuous improvement and therefore reserves the right to amend ranges and specifications without notice. Your Astralux dealer will be pleased to assist you. Whilst we have taken care over the production of this information Astralux and its dealers cannot be held responsible for any errors or omissions.